

2704 MODEL

Advanced Process Controller/Programmer

Ideal for:

- Vacuum heat treatment
- Carburising furnaces
- Semiconductor diffusion
- Creep and tensile testing
- Autoclaves
- Boiler control
- Environmental chambers

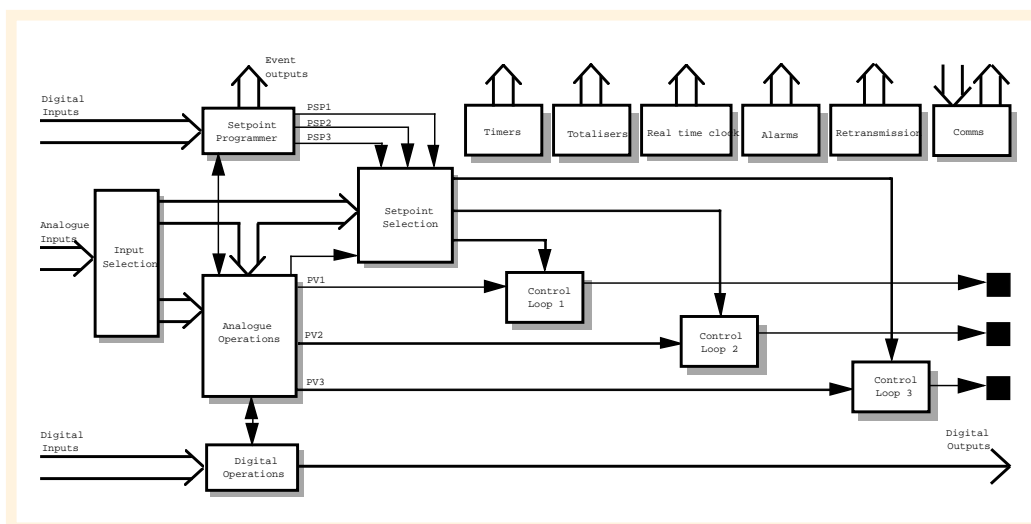
Features:

- 3 Control loops
- SP Programmer
- Customisable user interface
- Maths & logic functions
- Open communications

The 2704 is a highly accurate and stable process controller available in a single, dual or triple loop format. Features include setpoint programming and a comprehensive selection of maths and logic functions.

Its user interface incorporates a bright dot matrix display, providing extreme flexibility and ease of use. It is a highly configurable product offering many features previously found only in programmable logic controllers. This allows systems to be implemented integrating the process control and logic functions of a machine, therefore simplifying system complexity and reducing the total system costs.

Configuration is achieved either via the front panel interface or using Eurotherm's iTools configuration software.

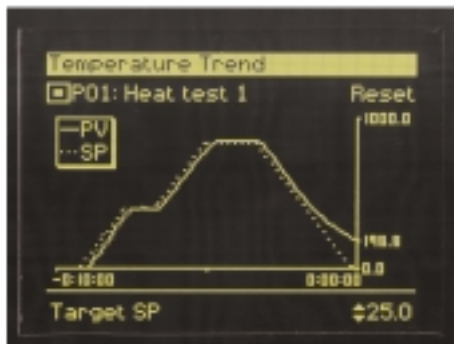


Control Functions

- **3 Control loops**
- **PID, VP or ON/OFF**
- **Cascade, ratio or override**
- **Gain scheduling**
- **Configurable control strategies**

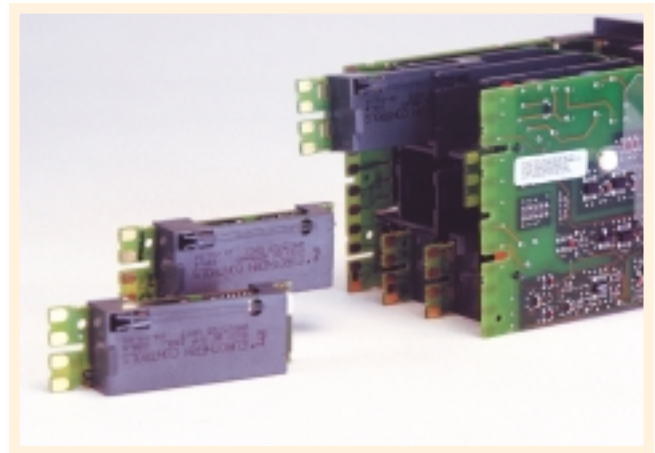
Eurotherm's advanced control algorithm gives stable straight-line control. Automatic tuning simplifies the commissioning procedure by performing a one shot tune to calculate the optimum PID values. To further optimise control especially in programmer applications, gain scheduling can be used to transfer control between up to six sets of PID values.

Trending enables the user to view, both current and historical information on the process variable and setpoint of each control loop.



IO Hardware

- **0.25uV PV input resolution**
- **Fixed and modular IO**
- **250Vac isolation**
- **Expandable IO**
- **Easily upgraded**



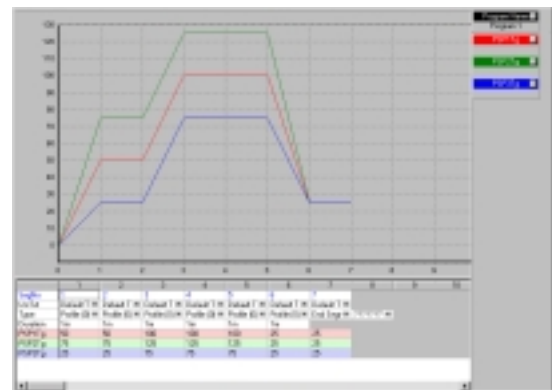
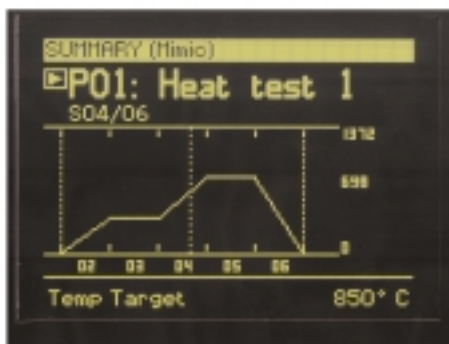
The 2704 incorporates a self correcting input circuit (INSTANT ACCURACY) to maximise accuracy and performance during initial warm up and changes in ambient temperature.

One universal and one high level analogue inputs, along with 10 digital IO are included as standard. Additionally, a further 5 IO modules may be fitted providing very flexible input/output combinations. The series 2000IO expander unit can provide an additional 20 digital inputs and 20 digital outputs.

Setpoint Programmer

- **60 Programs,**
- **3 Profiled setpoints/program**
- **650 Segments**
- **16 Event outputs**
- **Program mimic display**

Ideal for applications such as atmosphere or vacuum furnaces, and environmental chambers. The 2704 user interface offers the user an extremely easy method of editing, selecting and running programs.



- **Offline or online editing on PC**
- **Graphical representation**
- **Advanced editing functions**
- **Storage and retrieval of program files**

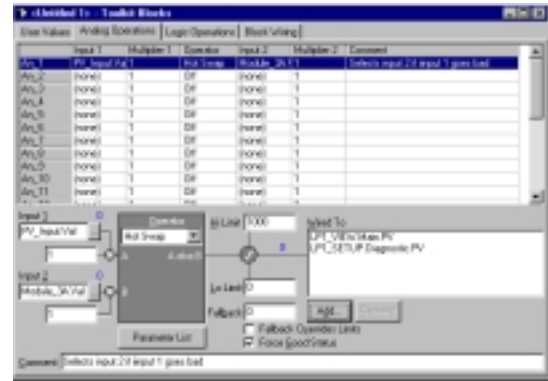
Toolkit Functions

- **Mathematical calculations**
- **Combinational logic**
- **Real time clock**
- **Timer functions**

Operators include;

Add, Subtract, Log, Exp, SQRT, AND, OR, Max, Min, Select and many more

ToolKit blocks allows the user to create custom solutions by internally wiring analogue and digital operations together in flexible ways. 24 analogue and 32 digital operations are available. Other functions are available including timers, totalisers and a real time clock.



I/O Expander

- **20 Logic inputs**
- **20 Relay outputs**

The 2000IO expander can increase the digital IO providing the option for greater remote operation of the programmer and expands the 2704 logic capability.

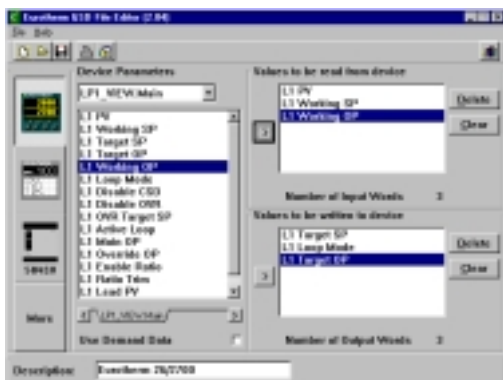


Slave Communications

- **Modbus™ RTU**
- **Profibus® DP**
- **Ethernet Modbus/TCP**
- **DeviceNet®**
- **EI-Bisync**

The 2704 supports two slave communication ports. Its modular build provides the user with a selection of communication protocols allowing easy integration into both PLC and PC supervisory systems.

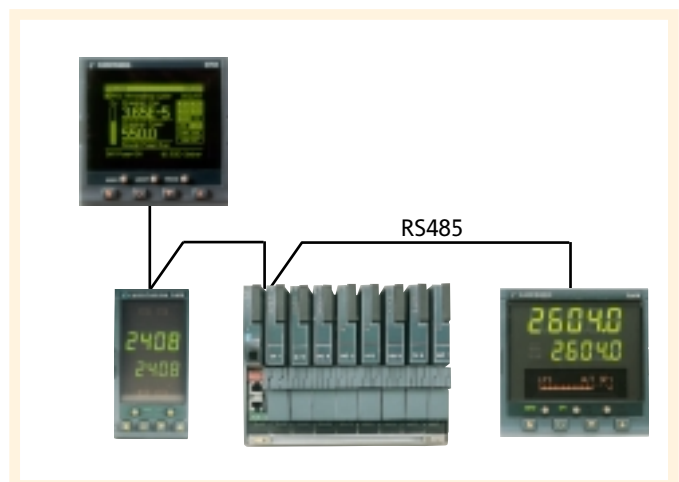
When using Profibus DP a GSD file has to be created, containing the information relating to the instruments parameters, that a Profibus master needs in order to communicate with its slave device. The GSD file for a 2704 is created using Eurotherm's GSD file editor.



Master Communications

- **Modbus Protocol**
- **100 read/write parameters**
- **Expands available hardware**
- **Interfaces to most Modbus slaves**

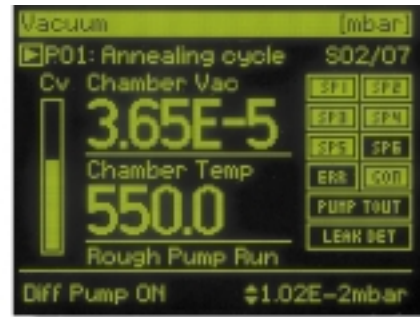
Master modbus communications significantly increases the applications open to 2704. In its simplest form it can be used to retransmit a setpoint to a number of slave controllers in a multi-zone furnace. Alternatively, it can be integrated with an 8 loop blind controller to provide a remote operator interface with SP programmer functions.



Vacuum

- Direct interface to vacuum gauges
- Auto Hi/Lo gauge selection
- 6 Vacuum setpoints
- Pump timeout alarm
- Leak detection routine

At the heart of the vacuum controller is a specially designed function block capable of accepting up to three vacuum inputs. The 2704 is capable of being used solely to control the vacuum pump down sequence of a furnace, or as an integral furnace controller where both temperature and vacuum are controlled.



Carbon potential

- %CP, O2 or Dewpoint Measurement
- CO correction
- Probe burn off and sooting alarm
- Sooting alarm

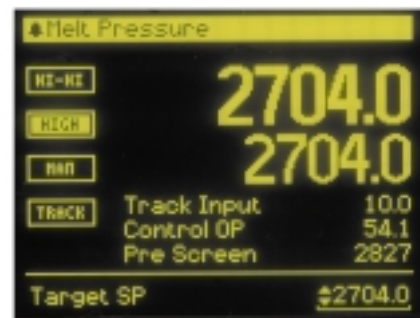
Ideal for use in gas carburising furnaces where Zirconia probes are used to measure Carbon Potential. A three loop controller can be used to control furnace temperature, carbon potential and quench. The setpoint programmer is used in batch applications to generate synchronised temperature and carbon profiles.



Melt Pressure

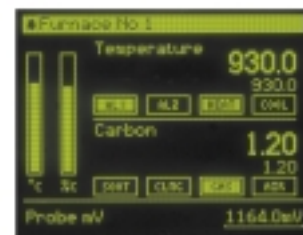
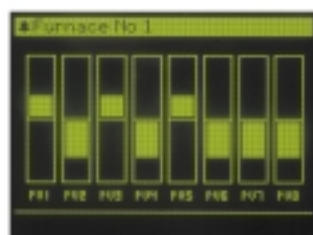
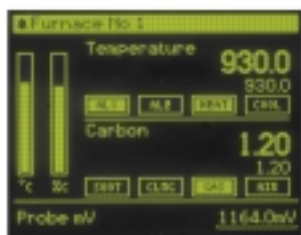
- 350Ω Strain gauge input
- Transducer excitation
- Pressure alarms
- Screen blockage alarm
- Simple user calibration with shunt

Suitable for precision pressure control in the plastic extrusion industries. Additionally a second pressure transducer can be used to provide a differential pressure alarm when the screen starts to block. Various machine start up strategies can be used to ensure a smooth transition from auto to manual mode.



Customisable Display

By using flexible User Pages, the user has the option of defining how the process screens are viewed. A maximum of eight user pages can be configured.



Technical specification

Quoted at 0 to 50°C unless otherwise stated.
Refer to Engineering Manual for more details

Control options

No. of loops	1, 2 or 3 loops
Options	Cascade, Ratio or Override
Modes	PID, ON/OFF or Valve Position
Applications	Carbon Potential, Humidity and Vacuum

STANDARD I/O

Precision PV Input	
Accuracy	±0.1%
Ranges	mV, mA, volts or RTD (PT100)
Thermocouple types	J,K,L,N,R,S,B,PII,C, plus others
Cold junction	Ext 0°C, 45°C or 50°C

Analogue input

Allocation	1 fitted
Accuracy	±0.1%
Ranges	-10V to 10V or 0 to 20mA

Digital I/O

Types	1 digital input 7 Bi-directional input/outputs 1 Changeover relay
-------	---

MODULES

Digital outputs

Types	Single relay, dual relay, Single Triac, Dual Triac, Single Logic and Triple Logic module
Allocation	Slot 1, 3, 4, 5 or 6 (Max 3 Triacs per unit)

Digital inputs

Types	Triple contact input, Triple logic input
Allocation	Slot 1, 3, 4, 5 or 6

Analogue outputs

Types	DC Control or DC Retransmission (5 Max)
Allocation	Slot 1, 3, 4, 5 or 6
Range	0 to 20mA or 0 to 10Vdc

Dual Analogue outputs

Allocation	Slot 1, 4 or 5
Range	4-20mA or 24Vdc transmitter PSU

High Resolution Analogue output

Allocation	Slot 1, 4 or 5
Range	4-20mA and 24Vdc transmitter PSU

Transmitter PSU

Allocation	Slot 1, 3, 4, 5 or 6
Transmitter	24Vdc @ 20mA

Transducer supply

Bridge voltage	Software selectable, 5 or 10Vdc
Bridge resistance	300Ω to 15Kohms

Potentiometer input

Potentiometer resistance	330Ω to 150Kohms
--------------------------	------------------

Precision PV input (Module)

Allocation	Slot 3 or 6
Accuracy	±0.1%
Ranges	mV, mA, volts or RTD (PT100)
Thermocouple types	J, K, T, L, N, R, S, B, PII, C, plus others
Cold junction	Ext 0°C, 45°C or 50°C

4 wire PRT (Modules)

Allocation	Slot 3 or 6
Accuracy	<0.005%
Types	PRT 100, PRT 25.5
Range	-200 to +850°C

Dual (Probe) input

Allocation	Slot 3 or 6
Accuracy	±0.1%
Ranges	mV, mA, volts or RTD (PT100)
Thermocouple types	J, K, T, L, N, R, S, B, PII, C, plus others
Cold junction	Ext 0°C, 45°C or 50°C

Analogue input (module)

Allocation	Slot 1, 3, 4 or 6
Accuracy	±0.2%
Ranges	mV, mA, volts or RTD (PT100)
Thermocouple types	J, K, T, L, N, R, S, B, PII, C, plus others
Cold junction	Ext 0°C, 45°C, or 50°C

SETPOINT PROGRAMMER

No profiles	1, 2 or 3 profiles
No. of programs	50 programs max.
No. of segments	650 time to target segments (Max) or 400 ramp rate segments (max.)
Event outputs	Up to 16

I/O Expander

10 I/O Version	4 Changeover and 6 normally open relay contacts 10 Logic inputs
20 I/O Version	4 Changeover and 16 normally open contacts 20 Logic inputs

ADVANCED FUNCTIONS

Application blocks	32 digital operations 32 analogue operations 3 multiple input blocks 50 user values
Timers	4 ON pulse, OFF delay, one shot and min-ON
Totalisers	4, trigger level and reset input
Pattern generators	16 patterns each with 16 bits
Real time clock	Day of week and time
Customisable screens	8 user screens
User switches	8, toggle and momentary function

Slave communications

Allocation	Slot H or J (Ethernet, DeviceNet/Profibus slot H only)
Types	Profibus DP RS485 Ethernet Modbus/TCP Modbus RTU RS485 (2 wire), RS485 (4 wire) or RS232 DeviceNet EI-Bisyc (subset of parameters)

Master communications

Allocation	Slot J
Types	Modbus RTU RS485 (2 wire), RS485 (4 wire) or RS232
Parameters	100 read/write

GENERAL SPECIFICATION

Display range	5 digits up to 4 decimal places 85 to 264Vac, 20 watts (max.) or 24Vdc or ac, 10 watts (max)
Operating ambient	0 to 50°C and 5 to 95%RH non condensing
Storage temperature	-10 to 70°C
Panel seal	IP65
EMC standards	EN61326-1 Suitable for domestic, commercial and light industrial as well as heavy industrial environments. (Domestic/light industrial (Class B) emissions, Industrial (Class A) Environment immunity emissions). With Ethernet module fitted product is only suitable for industrial environments, (Class A emissions)
Safety standards	Meets EN61010 installation category II, pollution degree 2
Atmospheres	Not suitable for use above 2000m or in explosive or corrosive atmospheres

Ordering information

It is only necessary to order the hardware required. Completion of the quick start code opposite will assist you in configuring the 2704.

If you require Eurotherm to supply a **fully configured product**, you can use the iTools configuration software to generate a clone file which will be downloaded into the 2704 prior to shipment. Eurotherm will then assign a specific number to your instrument allowing you to easily re-order the same configuration. If you have not previously purchased iTools, please contact your local Eurotherm sales office.

Controller Type	Supply Voltage	Loop/Programs	Applications	I/O slot 1	I/O slot 3	I/O slot 4	I/O slot 5	I/O slot 6	Comms H	Comms J	Manual	Toolkit Functions	Config-Tools
-----------------	----------------	---------------	--------------	------------	------------	------------	------------	------------	---------	---------	--------	-------------------	--------------

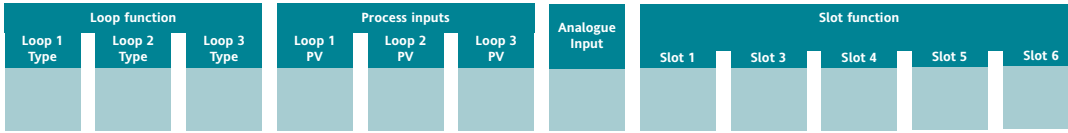
Controller Type	Loop/Programs	I/O slots 1,3,4,5,6	Comms H	Manual	Config Tools
2704 Standard 2704f Profibus	First digit 1- One loop 2- Two loops 3- Three loops Second digit -XX No programs -2- Twenty programs -5- Sixty programs -A- Async programs Third digit -XX No programs -1 1 Profile -2 2 Profile -3 3 Profile	XX None fitted R4 Change over relay R2 2 Pin relay RR Dual relay T2 Triac TT Dual triac D4 DC Control AM Analogue input (not slot 5) D6 DC retransmission PV PV Input (slots 3 & 6 only) DP Probe inputs (slots 3 & 6) ^(*) TL Triple logic input TK Triple contact input TP Triple logic output MS 24Vdc transmitter PSU VU Potentiometer input G3 5Vdc transducer PSU G5 10Vdc transducer PSU DO Dual 4-20mA OP/24Vdc ^(*) PSU (Slots 1, 4 & 5 only) LO Isolated single logic OP HR Hi Resolution DC retrans & 24Vdc PSU (Slots 1, 4 & 5 only) ^(*) TD TDS Conductivity input ^(*) PH 4 wire PRT input (100R) (slot 3 & 6) PL 4 wire PRT input (25.5R) (slot 3 & 6)	XX None fitted A2 232 Modbus Y2 2-wire 485 Modbus F2 4-wire 485 Modbus AE 232 Bisync ^(*) YE 2-wire 485 Bisync ^(*) FE 4-wire 485 Bisync ^(*) PB Profibus DN DeviceNet ET Modbus/TCP Ethernet	ENG English FRA French GER German ITA Italian NED Dutch SPA Spanish SWE Swedish	XX None IT Standard iTools
Supply Voltage VH 85-264Vac VL 20-29Vac/dc	Applications XX Standard ZC Zirconia V1 1 Gauge vacuum V2 3 Gauge vacuum BC Boiler ^(*)	Comms J XX None fitted A2 232 Modbus Y2 2-wire 485 Modbus F2 4-wire 485 Modbus M1 232 Master M2 2 Wire 485 Master M3 4 Wire 485 Master	Toolkit Functions XX Standard U1 Toolkit level 1 ^(*) U2 Toolkit level 2 ^(*)	Hardware notes: <ol style="list-style-type: none"> Basic Controller/Programmer includes 8 digital registers, 10 user values, 4 timers and 4 totalisers and a real time clock. Toolkit 1 includes 16 analogue, 16 digital, 1 multiple input block pattern generator, digital programmer, analogue switch, wiring block and 30 user values. Toolkit 2 includes Toolkit 1 plus extra 16 analogue, 16 digital, 2 multiple input blocks and 20 user values. Dual analogue input suitable for one low level and one high level input (inputs not isolated from each other). Each channel of the DO module can be 4-20mA control output or a 24Vdc power supply. The HR module has 1 high resolution DC output and 1 24Vdc power supply. HR module should be used in feedback mode, refer to TIBC 167. Boiler function includes bottom blowdown. TDS can be temperature compensated. 	

Example ordering code

2704 - VH - 323 - XX - RR - PV - D4 - TP - PV - A2 - XX - ENG - U1 - IT

This code describes a 3 loop controller with capability to store 20 three profile programs. Supply voltage is 85-264Vac. Modular hardware: 2 x PV input, 1 x Dual relay, 1 x DC control, 1 x Triple logic output, EIA-232 Comms. 16 analogue and 16 digital operations, iTools supplied with controller

Quick start code



Loop function	
XXXX	None
S	Standard PID
C	Cascade
R	Ratio
O	Override(7)
_PID	PID control
_ONF	On/Off control
_PIF	PID/OnOff control
_VP1	VP without feedback
_VP2	VP with feedback

Process inputs (Input type)	
X	None
J	J Thermocouple
K	K Thermocouple
T	T Thermocouple
L	L Thermocouple
N	N Thermocouple
R	R Thermocouple
S	S Thermocouple
B	B Thermocouple
P	Platinell II
C	C Thermocouple
Z	RTD/Pt100
A	4-20mA linear
Y	0-20mA linear
W	0-5Vdc linear
G	1-5Vdc linear
V	0-10Vdc linear
Custom downloads (replace C)	
Q	Custom curve
D	D thermocouple
E	E thermocouple
1	Ni/Ni18%Mo
2	Pt20%Rh/Pt40%Rh
3	W/W26%Re (Engelhard)
4	W/W26%Re (Hoskins)
5	W5%Re/W26%Re (Engelhard)
6	W5%Re/W26%Re (Bucose)
7	Pt10%Rh/Pt40%Rh
8	Exergen K80 I.R pyrometer

Analogue input	
XXX	None
P2-	PV Loop 2
P3-	PV Loop 3
S1-	SP Loop 1
S2-	SP Loop 2
S3-	SP Loop 3
A1-	Aux. PV Loop 1
A2-	Aux. PV Loop 2
A3-	Aux. PV Loop 3
L1-	Ratio Lead PV Loop 1
L2-	Ratio Lead PV Loop 2
L3-	Ratio Lead PV Loop 3
Input range	
Select third digit from table 1	

Table 1	
A	4-20mA linear
Y	0-20mA linear
W	0-5Vdc linear
G	1-5Vdc linear
V	0-10Vdc linear

Slot function	
XXX	Unconfigured
1-	Loop no. 1
2-	Loop no. 2
3-	Loop no. 3
Single relay, triac, logic	
-HX	Heat
-CX	Cool
Dual relay or triac	
-HC	PID Heat & Cool
-VH	VP Heat
-AA	FSH & FSH
-AB	FSH & FSL
-AC	DH & DL
-AD	FSH & DH
-AE	FSL & DL
-AF	FSL & FSL
-AG	FSH & DB
-AH	FSL & DB
-AJ	DB & DB
HHX	Heat output for loops 1 & 2
CCX	Cool OP's loops 1 & 2
P12	Prog events 1 & 2
P34	Prog events 3 & 4
P56	Prog events 5 & 6
P78	Prog events 7 & 8
Triple logic output	
-HX	CH1 Heat
-CX	CH1 Cool
-HC	CH 1 Heat, CH2 Cool
HHX	Heat output for loops 1, 2 & 3
HHH	Heat output for loops 1, 2 & 3
Single DC outputs	
-H-	PID Heat
-C-	PID Cool
-T-	PV retransmission
-S-	SP retransmission
For output range select third digit from table 1	
Precision PV input	
-PV	PV input module
-PA	Aux PV input (8)
-PL	Ratio lead input
Analogue input	
-R-	Setpoint
For input range select third digit from table 1	
Aux. & lead PV inputs	
-L-	Ratio lead input
-B-	Aux. PV input
For input range select third digit from table 1	
Potentiometer input	
-VF	VP Heat feedback
-RS	Remote SP
Dual DC 4-20mA/24Vdc PSU Output	
HHX	Heat output for loops 1 & 2
-HC	Heat Cool
-HT	CH1 Heat, Chan 2 PSU
TTX	Both channels PSU
High Resolution DC Output	
-TA	4-20mA PV Retrains
-TV	0-10V PV Retrains
-SA	4-20mA SP Retrains
-SV	0-10V SP Retrains

General notes:

1. Loop 1 PV defaults to main PV input on microboard. Loop 2 and 3 PV inputs must be fitted in I/O slots 3 or 6 or be assigned to the analogue input.
2. Alarm configuration refers to loop alarms only. One selection is allowed per loop. Additional alarms are available for the user to configure.
3. Thermocouple and RTD inputs assume sensor min and max values with no decimal point.
4. Linear inputs are ranged 0-100%, no decimal point.
5. Temperature units will be °C unless ordered by USA where °F will be used.
6. Remote setpoints assume loop min & max ranges.
7. VP1, VP2, VP3 and VP4 are not available with over ride function.
8. For Cascade and Override inputs only.
9. HR module should be used in feedback mode, please refer to TIBC160.

Quick start order code

SVP1 - SPID - SPID - K - Z - A - S1A - 1VH - 2PV - 2HV - 3HC - 3PV

This code configures the hardware specified above:

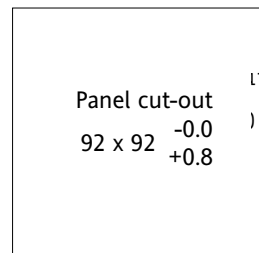
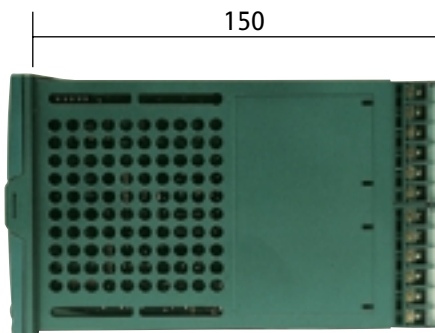
Loop 1: Valve position control, Type K input, Heat VP output in slot 1, 4-20mA remote setpoint input

Loop 2: PID control, RTD input in slot 3, 0-10Vdc Heat output in slot 4.

Loop 3: PID control, 4-20mA input in slot 6, Logic heat/cool output in slot 5.

Dimensional details

All dimensions in mm



Rear terminal connections

