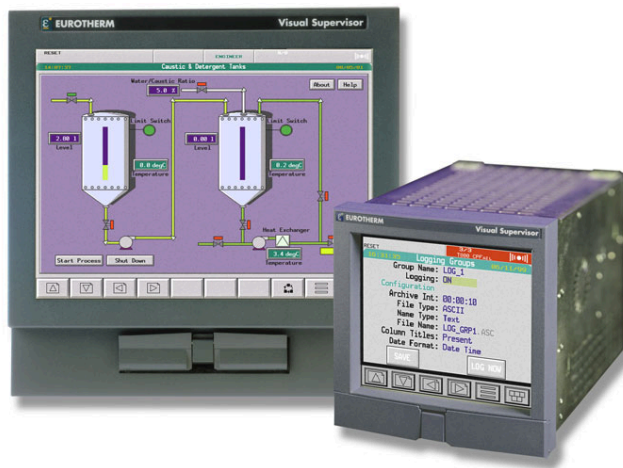


# T800 Visual Supervisor

21 CFR Part 11  
ENHANCED FOR



## Features

- mini DCS system
- powerful and lower cost replacement to a PLC and SCADA in a single package
- combined controller and operator panel
- multi setpoint programmers function
- comprehensive data logger and trending
- open communications: Profibus® DP and DPV1, Modbus® RTU and ALIN
- advanced recipe and batch capability including reports· printer support
- touch-screen display
- advanced continuous and sequential control
- comprehensive alarm and event management
- extensive pre-formatted displays and up to 99 user configurable pages
- internationalization
- bar code reader/scanner support
- optional user based security

The Visual Supervisor combines process control, data acquisition and logging, setpoint programmer, and operator functionality in a single cost effective unit. It is capable of performing both continuous and sequential control and features comprehensive alarm and event management and local data logging facilities. The Visual Supervisor can be used as a stand-alone system, or as a building block for a larger system.

Visual Supervisor with its advanced recipe and batch capability provides powerful solutions for controlling batch process and providing comprehensive batch reports.

A truly open I/O network is possible, as the Visual Supervisor provides support for both Profibus DPV1 and Modbus RTU. It can also be connected to the ALIN local network, allowing both peer-to-peer and system communications.

The graphical setpoint program of the Visual Supervisor offers between one and 16 analog setpoint profiles, and between one and 32 digital output profiles from a single time base. It is capable of running up to four setpoint programs simultaneously.

Auditor features designed to meet the requirements of the FDA 21 CFR Part 11 document for Electronic Signatures and Electronic Records.

## Specifications

### Processor type:

386 Intel  
520 AMD

### Dimensions:

1/4 VGA – 144W x 144H x 180D mm  
SVGA – 288W x 288H x 180D mm

### Inputs:

Via open I/O network supporting Profibus DP and DPV1 and Modbus RTU, ALIN

### Protocols:

ALIN, Profibus DP and DPV1, Modbus RTU

### Printer support:

Parallel, Serial

### Supply voltage:

90 to 250Vac, 24Vdc

### Power rating:

50VA, 30W

### Operating temp:

0 to 50°C

### Relative humidity:

5 to 85% RH non-condensing

### Front panel sealing:

IP65

### Configuration tools:

T555 Eurotherm Project Studio

### Literature:

HA027315 Brochure

HA261323U001 Product Data